



**IGNITE Projects: CPIC Prescribing Study
Clinical Informatics Survey**

Josh Peterson, MD, MPH
Vanderbilt University Medical Center

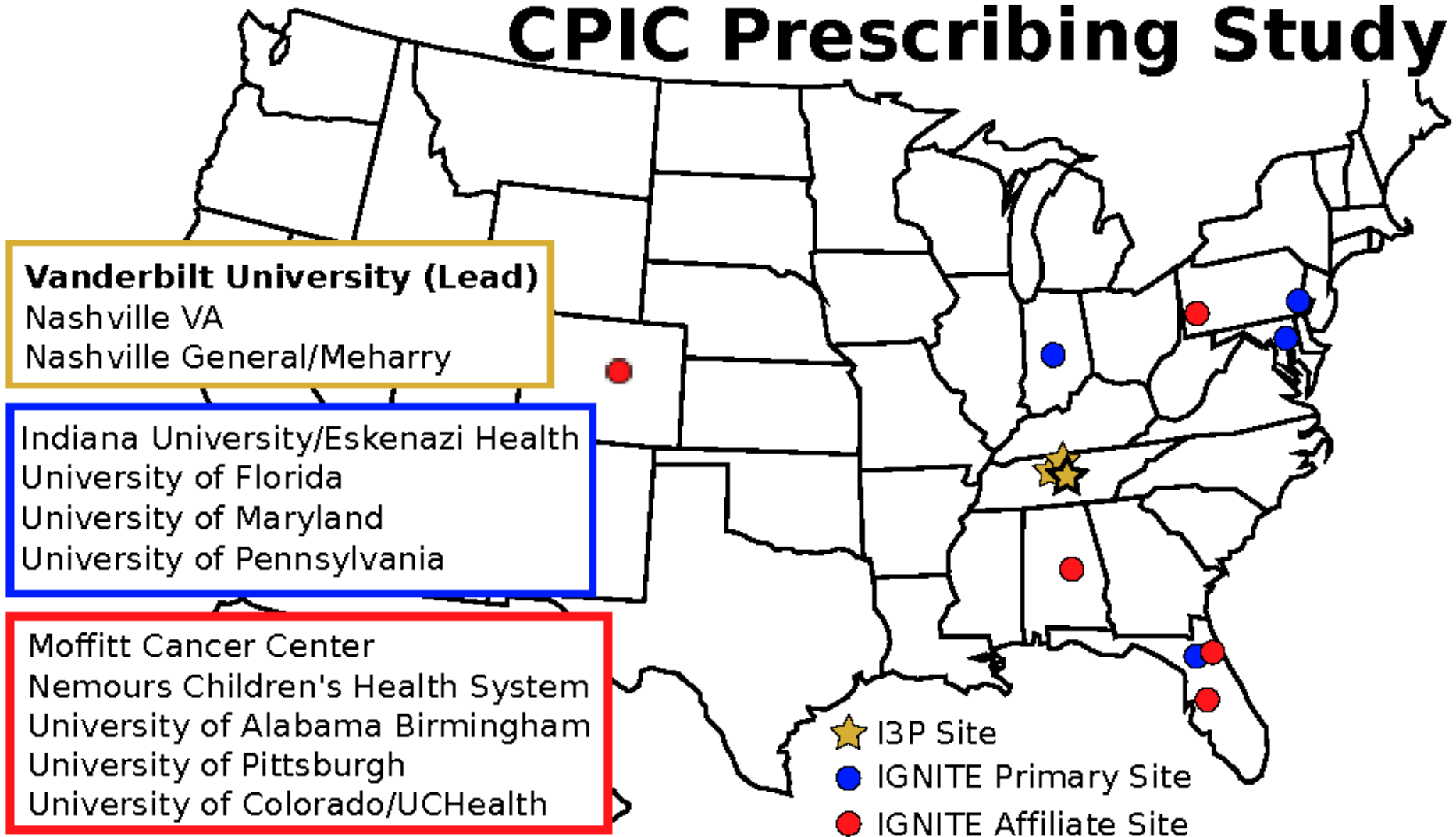
December 11-12, 2017



CPIC Prescribing Study

- Research Questions:
 - What is opportunity to apply PGx variants to prescriptions?
 - Are the opportunities changing over time?
- Methods:
 - Gather CPIC Level A prescribing data from 11 sites (7 IGNITE + 4 IGNITE affiliate sites)
 - Entire health system adult population
 - Parallel project for pediatric prescribing data

CPIC Prescribing Study

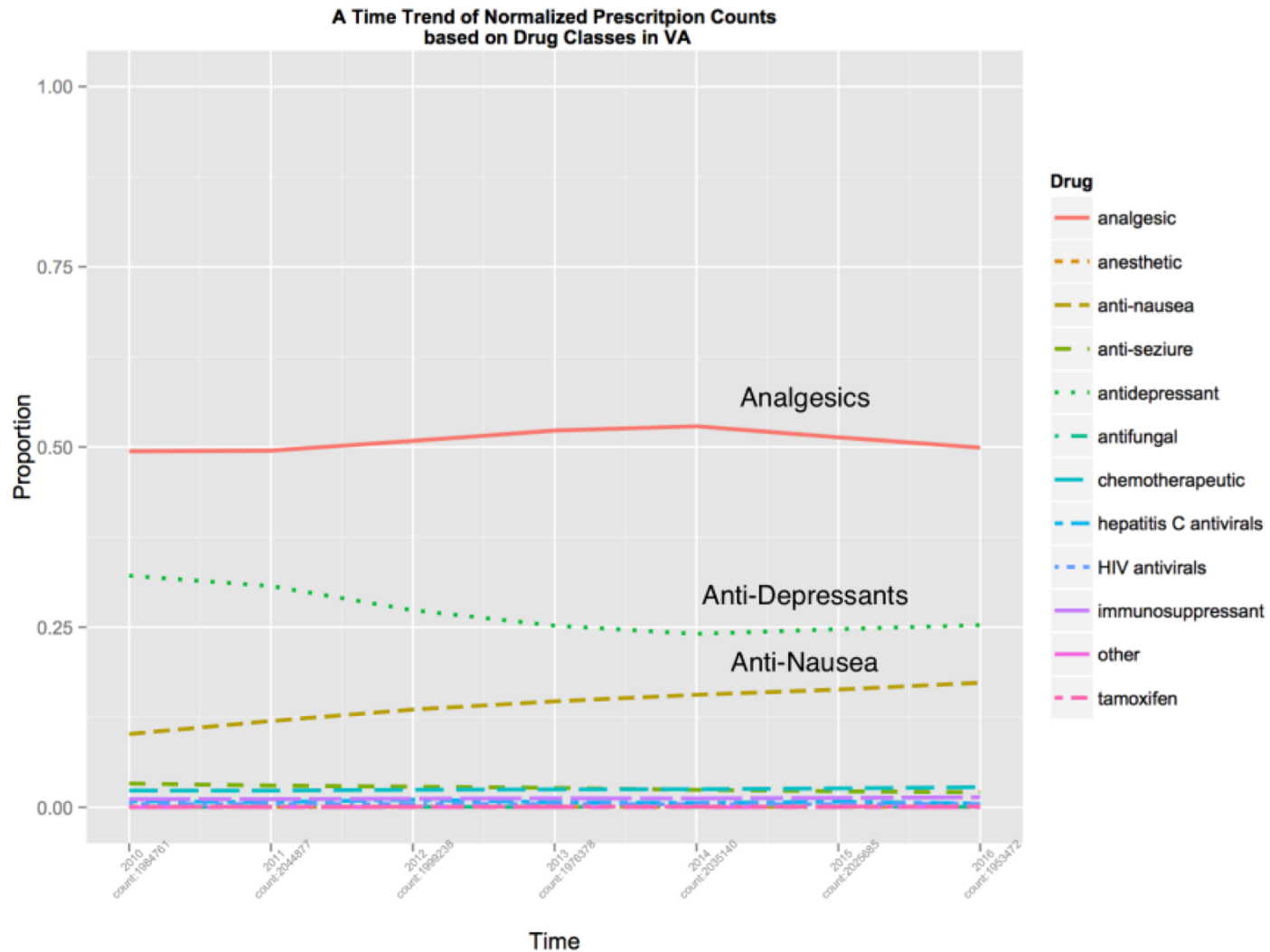


Vanderbilt University (Lead)
Nashville VA
Nashville General/Meharry

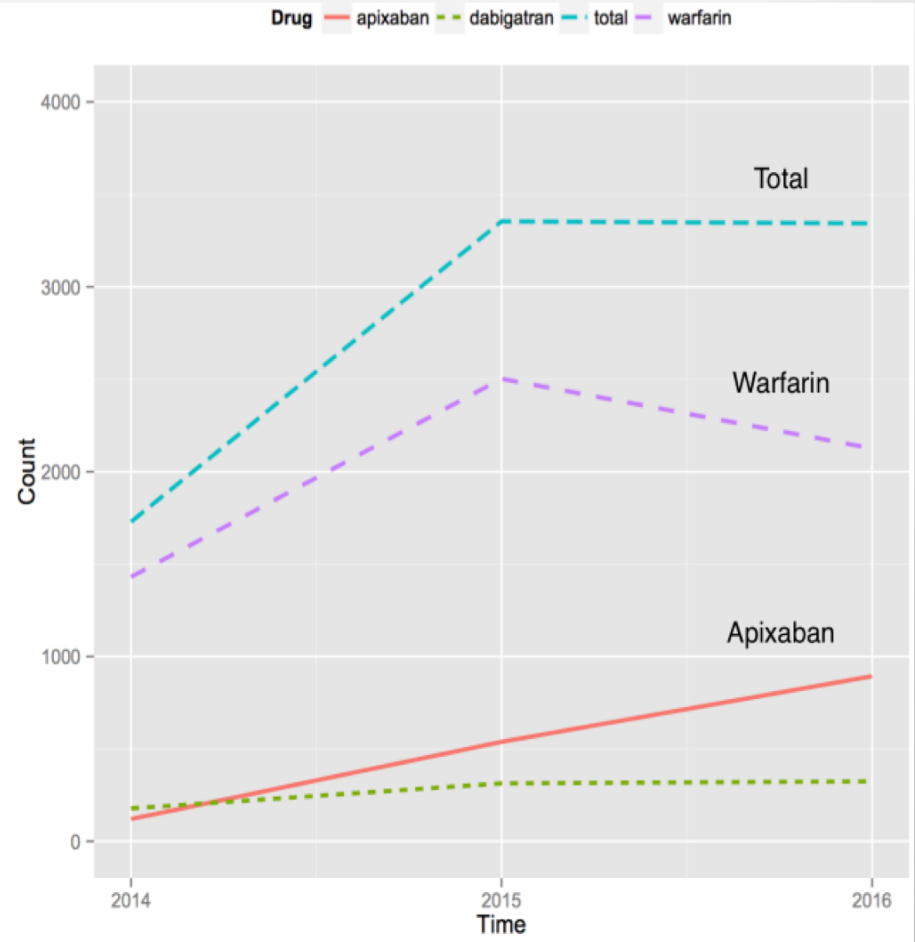
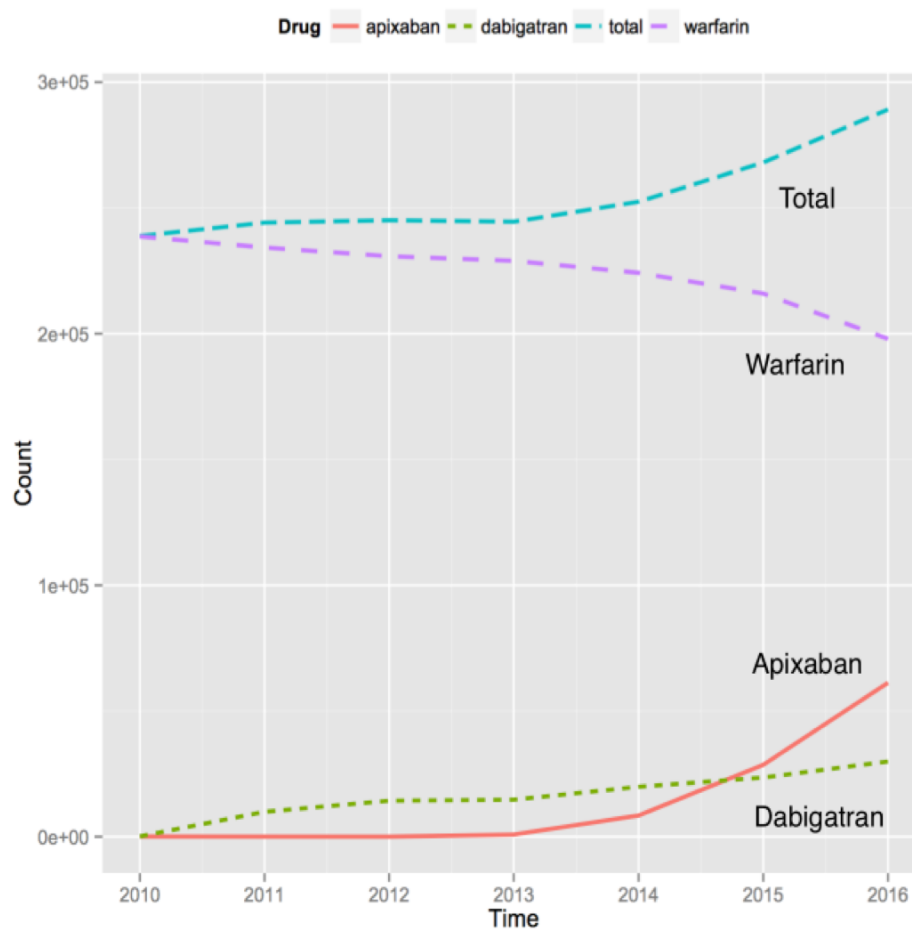
Indiana University/Eskenazi Health
University of Florida
University of Maryland
University of Pennsylvania

Moffitt Cancer Center
Nemours Children's Health System
University of Alabama Birmingham
University of Pittsburgh
University of Colorado/UCHealth

CPIC Rx Study: VA Data – Drug Class



CPIC Rx Results UF and Nashville VA Time Trend of Anticoagulant Rx



Veterans Affairs (VA)

University of Florida (UF)

CIWG Framework Study

- Objectives:
 - Describe components of informatics pipeline from genetic instrument to point of care (germline testing)
 - Comparison of implemented systems across diverse settings
- Methods: Key informant interviews with structured data collection through a REDCap instrument
- Progress: Preliminary data on 10 institutions with in-depth on 2 institutions

High Level Domains

- Does your institution have...
 - Local instrumentation
 - Bio-informatics pipeline
 - Automated draft reporting
 - Final interpretation by local experts
 - Interface to EHR
 - Storage of full variant information with annotations
 - Subset of actionable data available to EHR
 - Electronic health record (EHR) reporting of discrete data
 - Genomic clinical decision support (CDS)
 - Patient portal support for phenotype display
 - Methods for updating prior genomic results as new knowledge emerges

Framework Study: Screening Survey Prelim Results

- Does your organization outsource or send biospecimens to an external lab for germline molecular testing?
 - Yes = 8, No = 2
- What types of CLIA-certified germline molecular testing domains does your institution perform externally?

