



Mass General Brigham  
Wentworth-Douglass Hospital

# PGx Implementation – Wentworth-Douglass Hospital

Suzanne Stevens, PharmD, BCOP

# Wentworth-Douglass Hospital



- Wentworth-Douglass Hospital (WDH) is a 178-bed community hospital located in Dover, New Hampshire
  - 50 Wentworth Health Partners primary care and specialty care practices
  - MassGeneral Cancer Center
    - 2 locations
  - Part of MassGeneral Brigham Health system



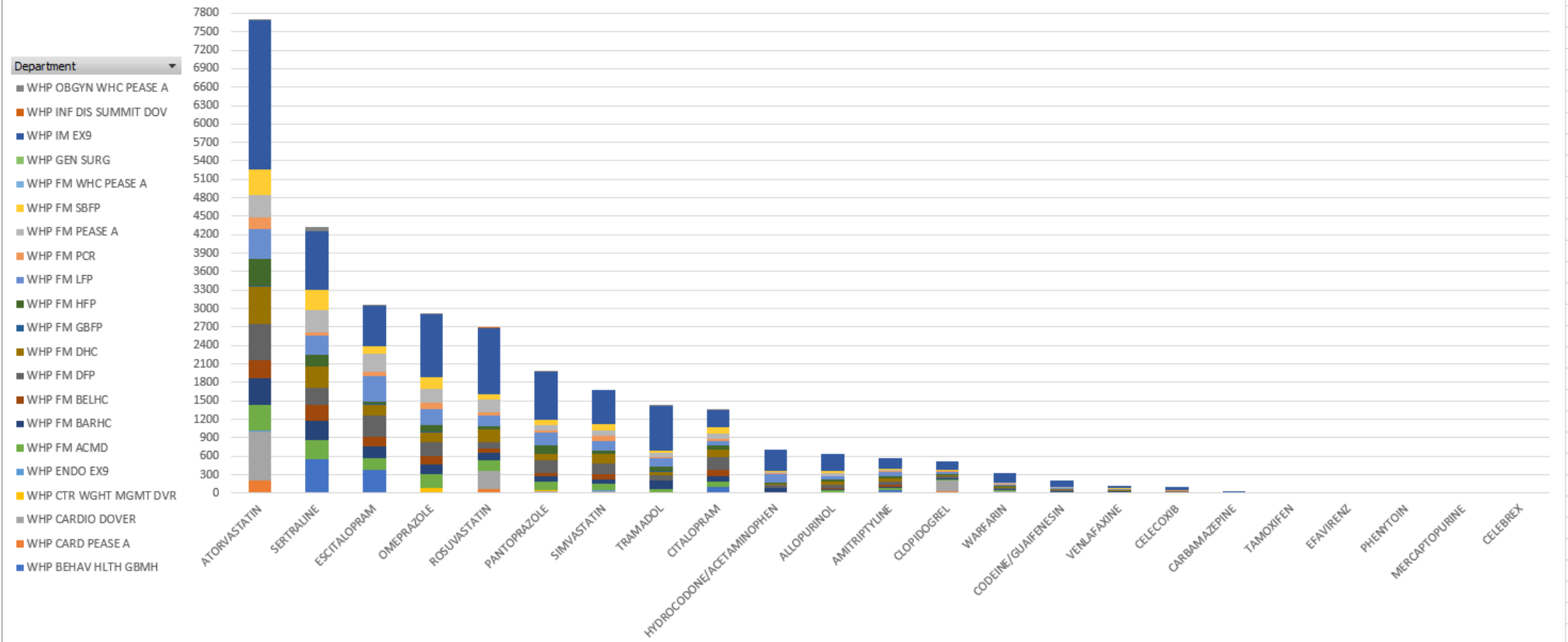
# WDH PGx Timeline

- Initiated PGx testing in January 2022 following a poor patient outcome
- Announcement of inaugural cohort of ASHP PGx Accelerator Program
  - Obtained Foundation funding based on patient safety initiative
- September 2022 – Program kick off
  - Monthly cohort meetings
  - Bi-weekly internal meetings with ASHP Accelerator coach
  
- Over 100 patients tested in the oncology clinic!
  - What about outside of oncology?

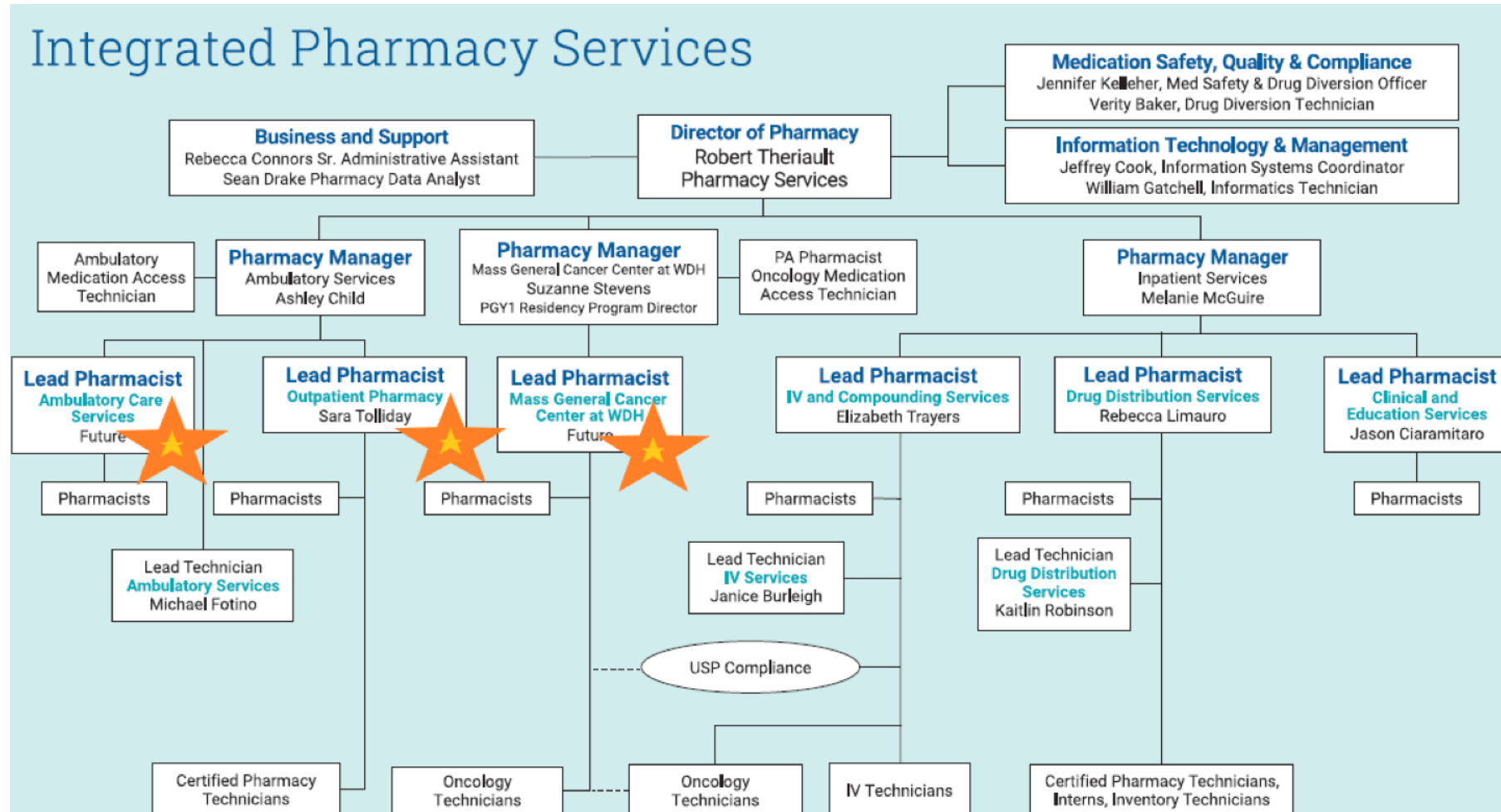


# Prescribing patterns at Wentworth Health Partners Practices

New Prescriptions By Department over 6 Months



# Who are the pharmacists at WDH?



# Bold Aim

Zero Preventable Harm through decreased adverse drug reactions and medication errors

Increased medication adherence, improved outcomes and cost savings

Strengthen the trust and confidence in the patient provider relationship

- Target patients with > 5 medications and/or patients experiencing intolerance to medications
- Metric: Test 75% of patients in the targeted population
  - Medication changes
  - Secondary findings
- Time frame: referral process and established workflow within 6 months



# Implementation Team

- Wentworth-Douglass Pharmacists imbedded in:
  - Oncology
  - Surgical Services
  - Primary care/Family care
  - Outpatient Pharmacy
  - Cardiology



# Service Delivery System



Currently offering services to oncology and surgical services



PGx referral to pharmacist imbedded service lines (Ambulatory Care)



Two visit model

Visit 1 – explanation of testing, test patients

Visit 2 – review result, provide recommendations to patient and provider





# Outcomes

- Of the 100 plus patients tested in oncology and surgical services
  - Over 10% of patients have had dose adjustments for 5-Fluorouracil and/or Irinotecan
  - Alternative 5HT-3's for oncology patients found to be CYP2D6 ultra-rapid metabolizers
  - Secondary findings – 2 oncology patients recently started on high statins found to have decreased function of the SLCO1B1 gene
  - 3 complex patients referred from surgical services resulting in changes in medication management
- Patient feedback has been VERY positive!
  - Referrals across specialties for patients seeking testing for loved ones



# Breakthroughs



9 PGx Certified Pharmacists at Wentworth-Douglass



Pivot to focus on Transitions of Care and Community Pharmacy



Comprehensive referral for pharmacy services including Pharmacogenomics



PGx services presentation at P&T, Patient Family and Advocacy Group, Surgical Services, Genetics, Pain and Palliative Care, Oncology Quality Subcommittee, Commission on Cancer



Continued support to advertise services established at WDH



# Challenges



Laboratory delays/shutdowns



Sunsetting of Wentworth Health Partners Genetics program



Lack of reimbursement/recognition by state of NH



Lack of Clinical Decision Support



Insurance coverage and out of pocket cost



# Next Steps

- Continue PGx acceleration via Project Management Team
- Continue to expand services into additional areas
  - Transitions of care- cardiac patients (statins, clopidogrel)
- Establish point of care testing in the Community Pharmacy
- Educational campaign to increase awareness to providers and patients
  - Patient brochures, medial highlighting services in community pharmacy and WHP Ambulatory practices
- Collaborate with MGB Genetics for referrals



# WDH Experience

- Access to experts and clinical coaches
- Collaboration/networking
- Tools
  - Practice management assessment tool
  - Performance story guide
  - Implementation workbook
- Pharmacogenomics education
- Time management





**Mass General Brigham**